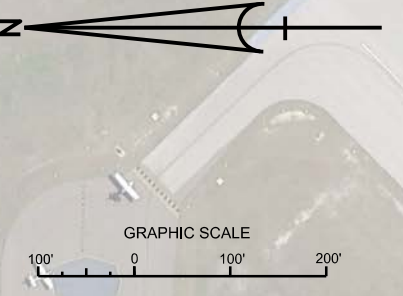


MATCHLINE SHEET NO. 020 SAR STA. 28+00

MATCHLINE SHEET NO. 022 SAR STA. 3+00

MAP LABEL	AIDS TO NAVIGATION	PLANE COORDINATES		LATITUDE	LONGITUDE
		X	Y		
INFO SIGN	SIGN (09/20)	516,224	997,777	27°04'40.93"	82°25'48.24"
INFO SIGN	SIGN (09/20)	516,096	997,805	27°04'41.20"	82°25'49.66"
INFO SIGN	SIGN (09/20)	516,033	999,112	27°04'54.15"	82°25'48.19"
INFO SIGN	SIGN (09/20)	516,095	999,124	27°04'54.26"	82°25'49.71"

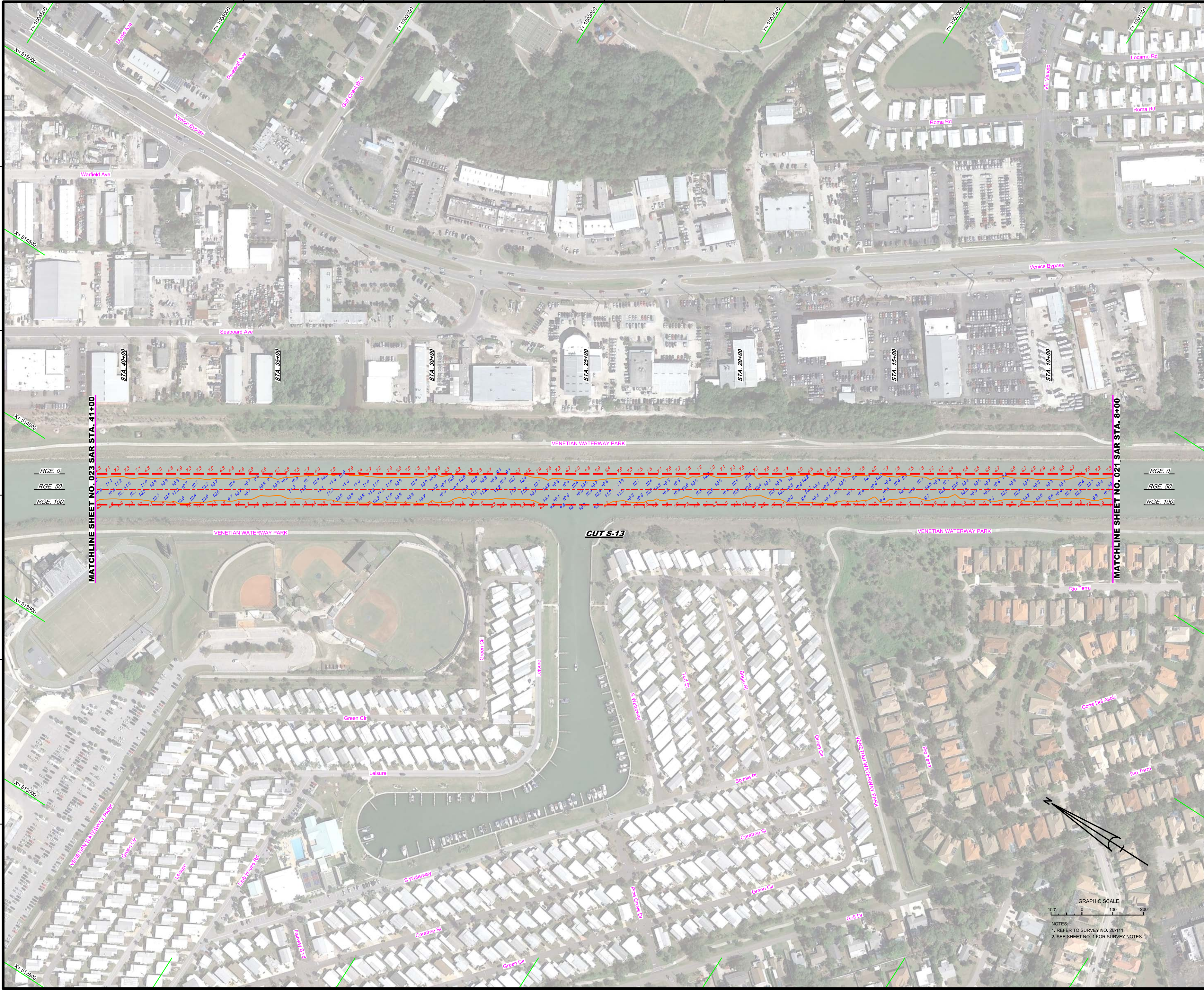


NOTES:
1. REFER TO SURVEY NO. 20-111.
2. SEE SHEET NO. 1 FOR SURVEY NOTES.

DEPARTMENT OF THE ARMY
JACKSONVILLE DISTRICT, CORPS OF ENGINEERS
JACKSONVILLE, FLORIDA

Designed by: WRM
Checked by: GHR
Drawn by: WRM
Scale: AS SHOWN
Date: SEP 2020

GULF INTRACOSTAL WATERWAY RIVER
CALOOCHEE CANAL
SARASOTA COUNTY, FLORIDA
**HYDROGRAPHIC EXAM SURVEY FY20
9-FOOT PROJECT**
STA. 28+00 CUT S-12 THRU STA. 8+00 CUT S-13
PLAN
Scale: AS SHOWN
Drawing no. **21**
SHEET 21 OF 62



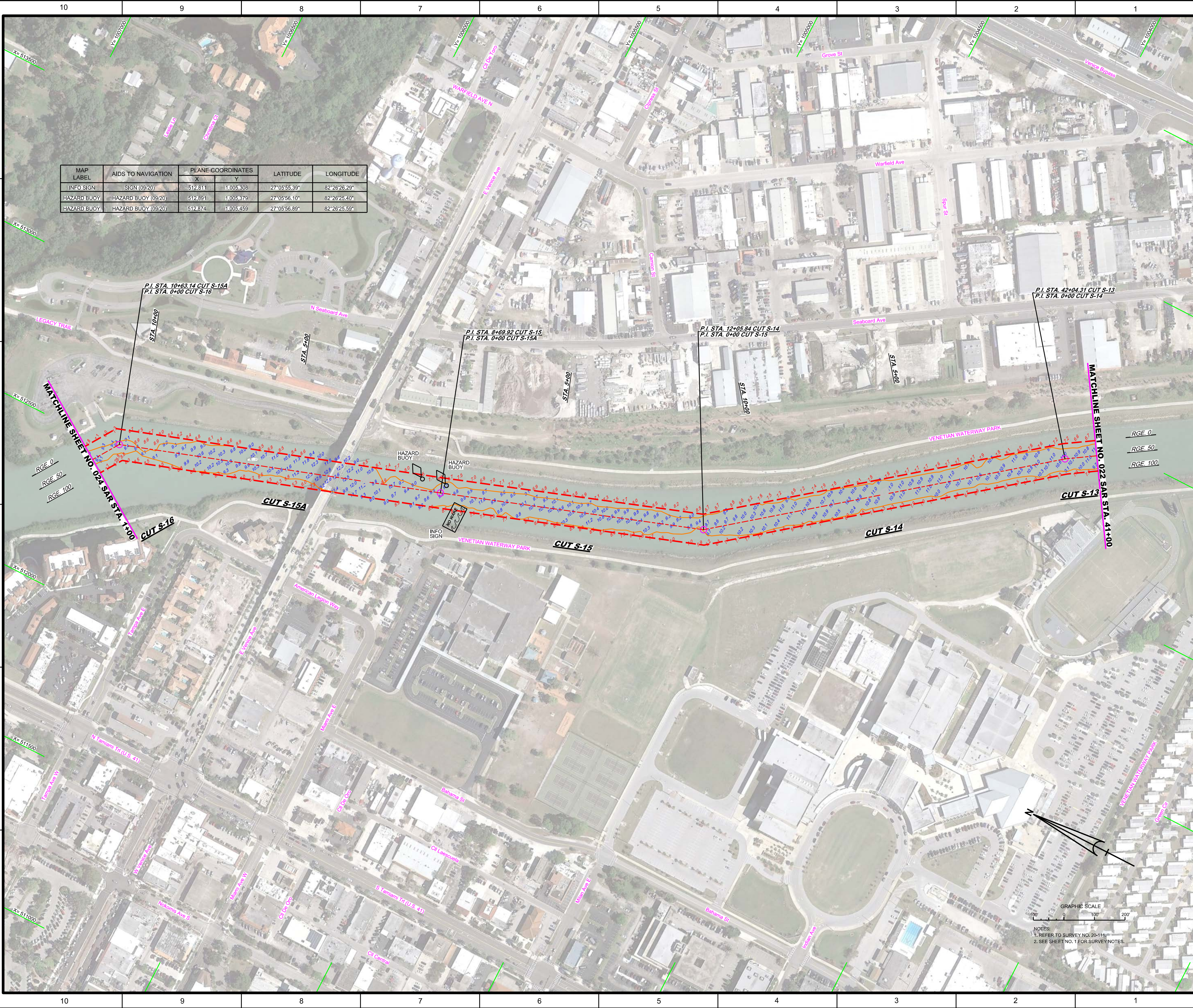
US Army Corps of Engineers
 Jacksonville District
 SAFETY ON THIS JOB
 DEPENDS ON YOU

DEPARTMENT OF THE ARMY
 JACKSONVILLE DISTRICT, CORPS OF ENGINEERS
 JACKSONVILLE, FLORIDA


Designated By: GHR
 Designated By: WRM
 Designated By: WRM
 Designated By: WRM
 Date: SEP 2020

GULF INTRACOASTAL WATERWAY RIVER
 CALOOCHEE RIVER
 SARASOTA COUNTY, FLORIDA
HYDROGRAPHIC EXAM SURVEY FY20
9-FOOT PROJECT
 STA. 8+00 THRU STA. 41+00 CUT S-13
PLAN
 Scale: AS SHOWN
 Drawing no. **22**
 SHEET 22 OF 62

NOTES:
 1. REFER TO SURVEY NO. 20-111.
 2. SEE SHEET NO. 1 FOR SURVEY NOTES.



MAP LABEL	AIDS TO NAVIGATION	PLANE COORDINATES		LATITUDE	LONGITUDE
		X	Y		
INFO SIGN	SIGN (09/20)	512.811	1,005.308	27°05'55.39"	82°26'26.29"
HAZARD BUOY	HAZARD BUOY (09/20)	512.891	1,005.379	27°05'56.10"	82°26'25.40"
HAZARD BUOY	HAZARD BUOY (09/20)	512.874	1,005.459	27°05'56.89"	82°26'25.59"



US Army Corps of Engineers
Jacksonville District
SAFETY ON THIS JOB
DEPENDS ON YOU

DEPARTMENT OF THE ARMY
JACKSONVILLE DISTRICT, CORPS OF ENGINEERS
JACKSONVILLE, FLORIDA

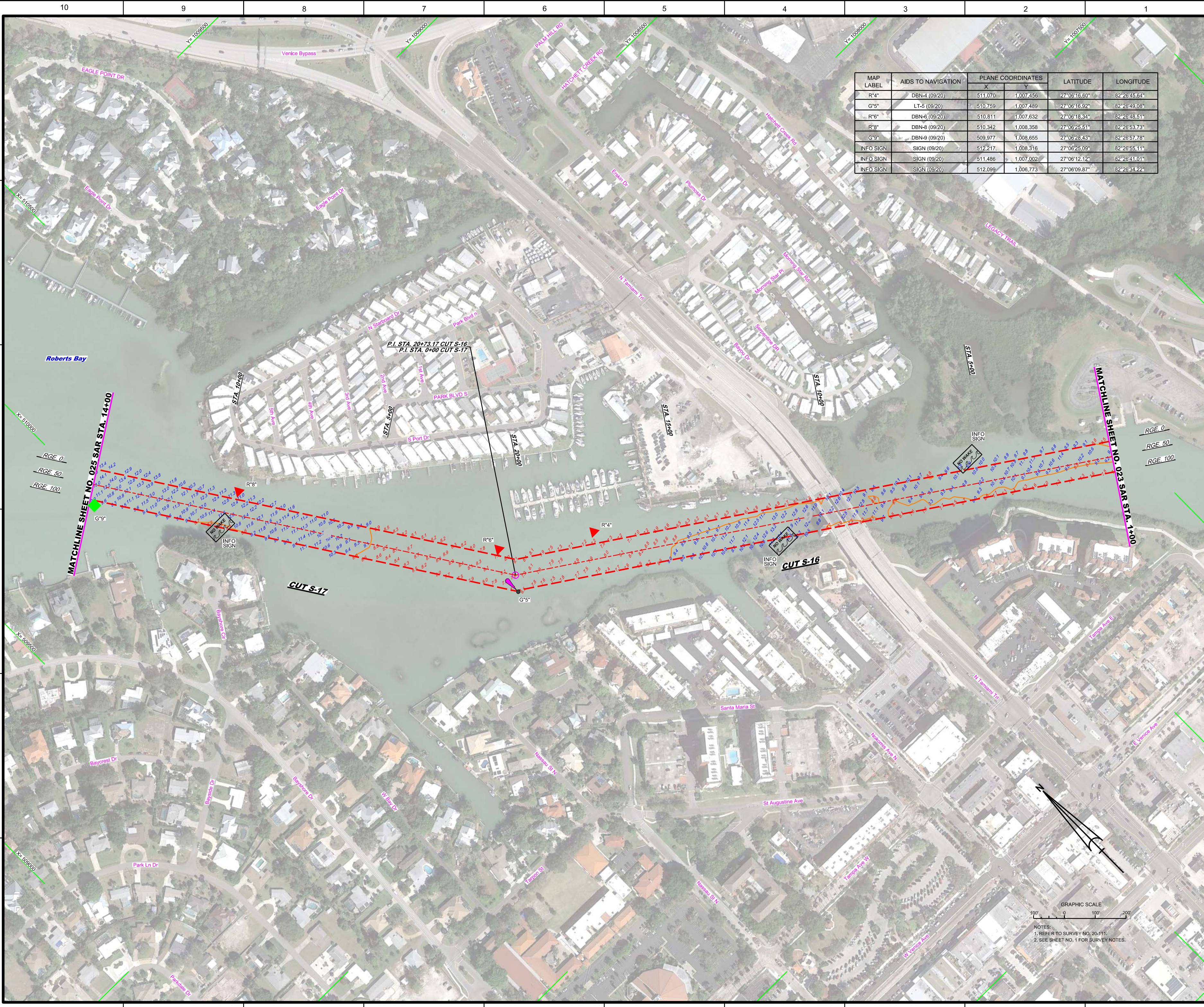
Drawn by: GHR
Checked by: GHR
Designed by: WRM
DWG No: WRM
File No: WRM
Date: SEP 2020

20-1114-AV-DGN
20-1114-CON-DGN
20-1114-S-001, S-16-0A-DGN
20-1114-S-001, S-16-0A-DGN
20-1114-S-001, S-16-0A-DGN
20-1114-S-001, S-16-0A-DGN
20-1114-S-001, S-16-0A-DGN
20-1114-S-001, S-16-0A-DGN


HYDROGRAPHIC EXAM SURVEY FY20
9-FOOT PROJECT
STA. 41+00 CUT S-13 THRU STA. 1+00 CUT S-16
PLAN

Scale: AS SHOWN
Drawing no.
23
SHEET 23 OF 62

GRAPHIC SCALE
0 100 200
NOTES:
1. REFER TO SURVEY NO. 20-1114
2. SEE SHEET NO. 1 FOR SURVEY NOTES.



MAP LABEL	AIDS TO NAVIGATION	PLANE COORDINATES		LATITUDE	LONGITUDE
		X	Y		
R*4	DBN-1 (09/20)	511,070	1,007,456	27°06'16.60"	82°26'45.64"
G*5	LT-5 (09/20)	510,759	1,007,489	27°06'16.92"	82°26'49.08"
R*6	DBN-5 (09/20)	510,811	1,007,632	27°06'18.34"	82°26'46.51"
R*8	DBN-8 (09/20)	510,342	1,008,358	27°06'25.51"	82°26'53.73"
G*9	DBN-9 (09/20)	509,977	1,008,655	27°06'28.43"	82°26'57.78"
INFO SIGN	SIGN (09/20)	512,217	1,008,316	27°06'25.09"	82°26'55.11"
INFO SIGN	SIGN (09/20)	511,486	1,007,002	27°06'12.12"	82°26'41.01"
INFO SIGN	SIGN (09/20)	512,099	1,006,773	27°06'09.87"	82°26'34.22"



US Army Corps of Engineers
Jacksonville District

SAFETY ON THIS JOB DEPENDS ON YOU

DEPARTMENT OF THE ARMY
JACKSONVILLE DISTRICT, CORPS OF ENGINEERS
JACKSONVILLE, FLORIDA

Check By: GHR Designated By: WRM Drawn By: WRM File No: 20-114-024-SAR.DGN Date: SEP 2020	Designated By: WRM Drawn By: WRM File No: 20-114-024-SAR.DGN Date: SEP 2020
---	--

GULF INTRACONSTITUTIONAL WATERWAY TO THE RIVER
SARASOTA COUNTY, FLORIDA

**HYDROGRAPHIC EXAM SURVEY FY20
9-FOOT PROJECT**

STA. 1+00 CUT S-16 THRU STA. 14+00 CUT S-17

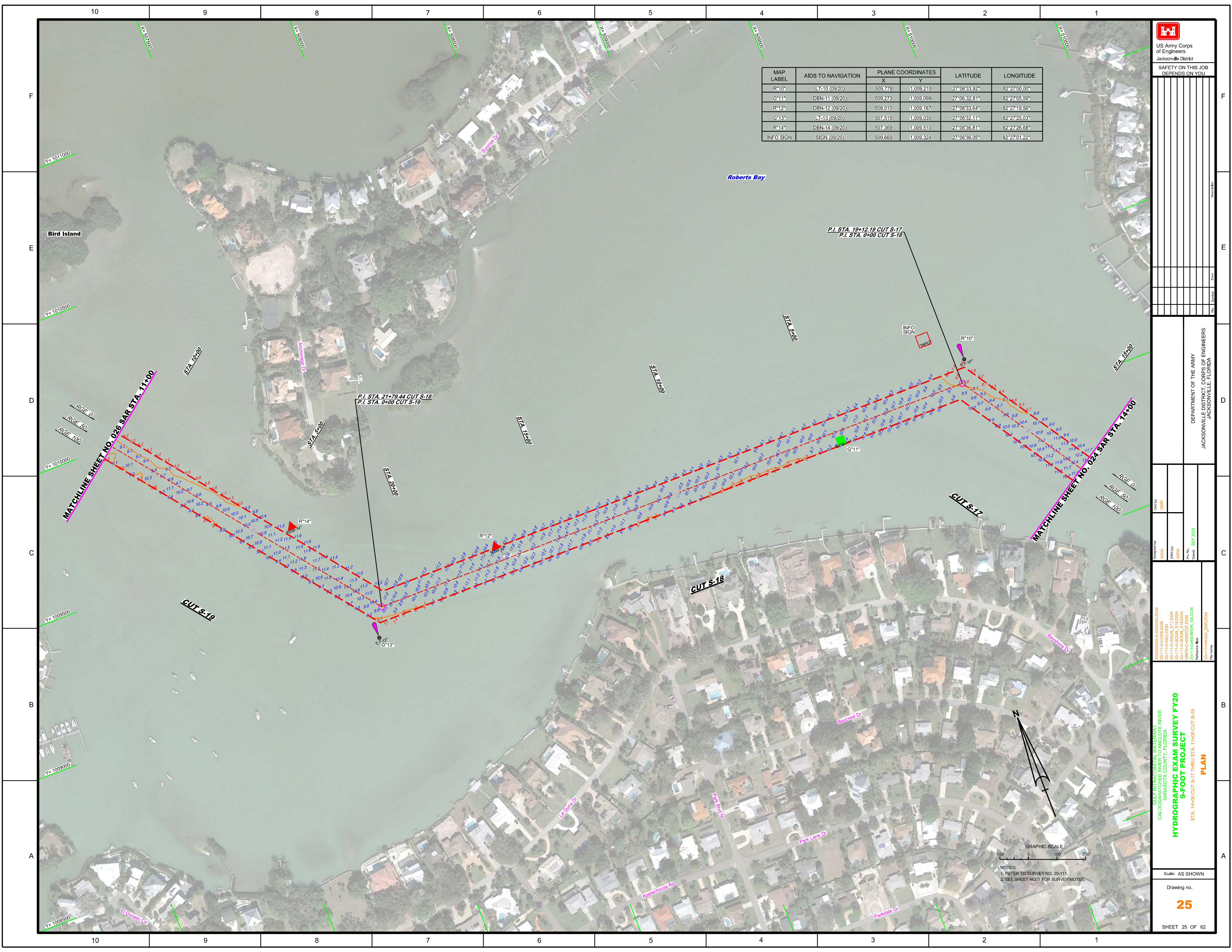
PLAN

Scale: AS SHOWN

Drawing no. **24**

SHEET 24 OF 62

NOTES:
1. REFER TO SURVEY NO. 20-114-024.
2. SEE SHEET NO. 1 FOR SURVEY NOTES.



MAP LABEL	AIDS TO NAVIGATION	PLANE COORDINATES		LATITUDE	LONGITUDE
		X	Y		
R*10"	LT-10 (09/20)	509,776	1,009,210	27°06'33.92"	82°27'00.00"
G*11"	DBN-11 (09/20)	509,273	1,009,099	27°06'32.81"	82°27'05.59"
R*12"	DBN-12 (09/20)	508,010	1,009,187	27°06'33.64"	82°27'19.56"
G*13"	LT-13 (09/20)	507,515	1,009,035	27°06'32.11"	82°27'25.03"
R*14"	DBN-14 (09/20)	507,369	1,009,510	27°06'36.81"	82°27'26.68"
INFO SIGN	SIGN (09/20)	509,669	1,009,324	27°06'36.05"	82°27'01.22"

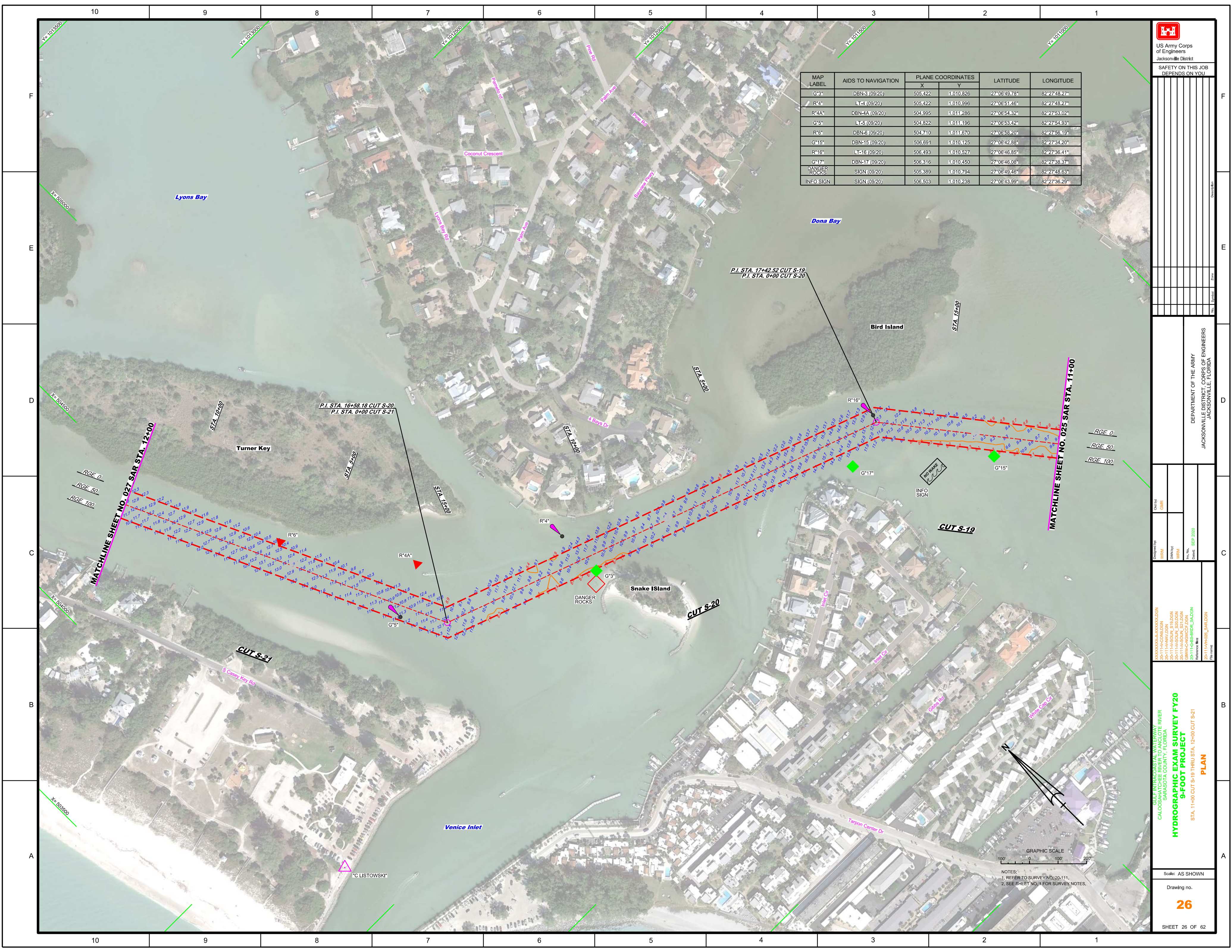
US Army Corps of Engineers
 Jacksonville District
 SAFETY ON THIS JOB
 DEPENDS ON YOU

DEPARTMENT OF THE ARMY
 JACKSONVILLE DISTRICT, CORPS OF ENGINEERS
 JACKSONVILLE, FLORIDA

Call by: GHR
 Designed by: WRM
 Drawn by: WRM
 File No: 20-1114-02A_SAR.DGN
 Date: SEP 2020

GULF INTRACOASTAL WATERWAY TO RIVER
 SARASOTA COUNTY, FLORIDA
HYDROGRAPHIC EXAM SURVEY FY20
9-FOOT PROJECT
 STA. 14+00 CUT S-17 THRU STA. 11+00 CUT S-19
PLAN
 Scale: AS SHOWN
 Drawing No. **25**
 SHEET 25 OF 62

GRAPHIC SCALE
 1" = 200'
 NOTES:
 1. REFER TO SURVEY NO. 20-111.
 2. SEE SHEET NO. 1 FOR SURVEY NOTES.



MAP LABEL	AIDS TO NAVIGATION	PLANE COORDINATES		LATITUDE	LONGITUDE
		X	Y		
G*3	DBN-3 (09/20)	505,422	1,010,826	27°06'49.78"	82°27'48.27"
R*4	LT-4 (09/20)	505,422	1,010,956	27°06'51.46"	82°27'48.27"
R*4A	DBN-4A (09/20)	504,995	1,011,286	27°06'54.32"	82°27'53.02"
G*5	LT-5 (09/20)	504,822	1,011,195	27°06'53.42"	82°27'54.93"
R*6	DBN-6 (09/20)	504,740	1,011,670	27°06'58.20"	82°27'56.19"
G*15	DBN-15 (09/20)	506,691	1,010,125	27°06'42.88"	82°27'34.20"
R*16	LT-16 (09/20)	506,493	1,010,527	27°06'46.85"	82°27'36.41"
G*17	DBN-17 (09/20)	506,316	1,010,450	27°06'46.08"	82°27'38.37"
DANGER ROCKS	SIGN (09/20)	505,389	1,010,794	27°06'49.46"	82°27'48.63"
INFO SIGN	SIGN (09/20)	506,503	1,010,238	27°06'43.99"	82°27'36.29"



US Army Corps of Engineers
Jacksonville District
SAFETY ON THIS JOB
DEPENDS ON YOU

Rev.	Symbol	Description

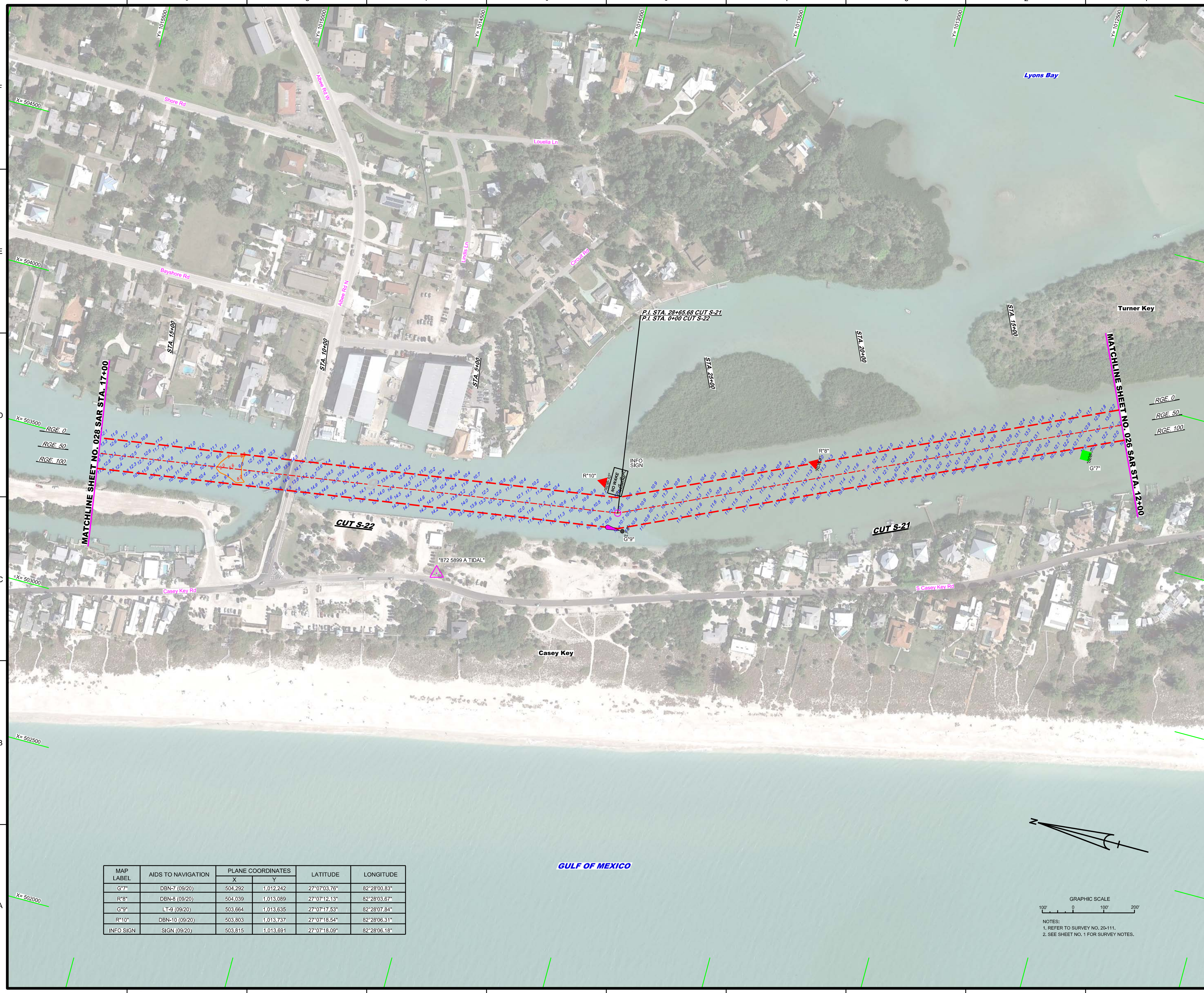
DEPARTMENT OF THE ARMY
JACKSONVILLE DISTRICT, CORPS OF ENGINEERS
JACKSONVILLE, FLORIDA

Category	Value
Drawn by	WRM
Checked by	WRM
Designed by	WRM
Scale	AS SHOWN
Date	SEP 2020

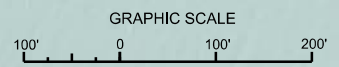
GULF INTRACOSTAL WATERWAY - RIVER
SARASOTA COUNTY, FLORIDA
HYDROGRAPHIC EXAM SURVEY FY20
9-FOOT PROJECT
PLAN
STA. 11+00 CUT S-19 THRU STA. 12+00 CUT S-21

Scale: AS SHOWN
Drawing no. **26**
SHEET 26 OF 62

GRAPHIC SCALE
100' 0 100' 200'
NOTES:
1. REFER TO SURVEY NO. 20-111.
2. SEE SHEET NO. 1 FOR SURVEY NOTES.



MAP LABEL	AIDS TO NAVIGATION	PLANE COORDINATES		LATITUDE	LONGITUDE
		X	Y		
G*7	DBN-7 (09/20)	504,292	1,012,242	27°07'03.76"	82°28'00.83"
R*8	DBN-8 (09/20)	504,039	1,013,089	27°07'12.13"	82°28'03.67"
G*9	LT-9 (09/20)	503,664	1,013,635	27°07'17.53"	82°28'07.84"
R*10	DBN-10 (09/20)	503,803	1,013,737	27°07'18.54"	82°28'06.31"
INFO SIGN	SIGN (09/20)	503,815	1,013,691	27°07'18.09"	82°28'06.18"

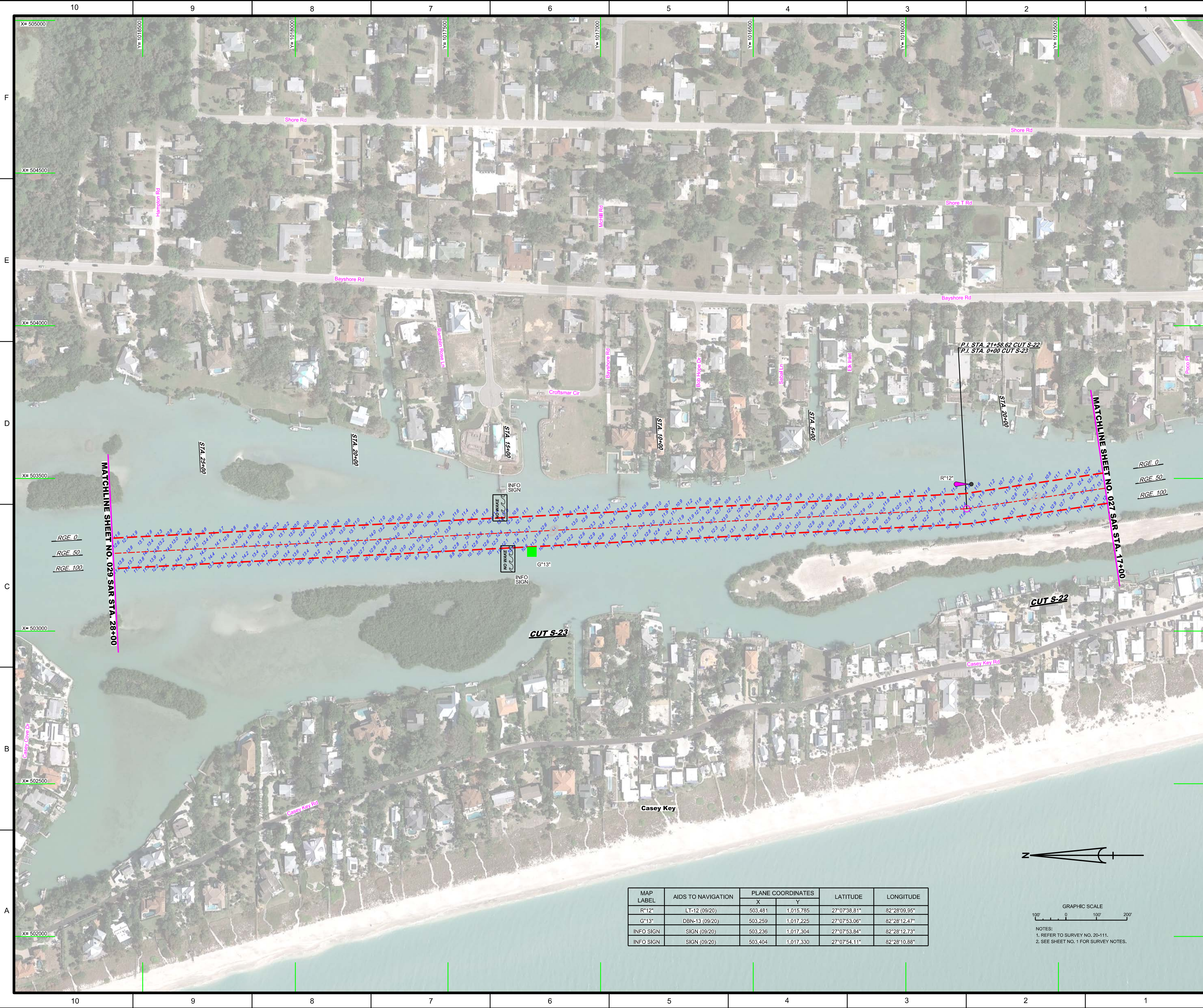



NOTES:
1. REFER TO SURVEY NO. 20-111.
2. SEE SHEET NO. 1 FOR SURVEY NOTES.

DEPARTMENT OF THE ARMY
JACKSONVILLE DISTRICT, CORPS OF ENGINEERS
JACKSONVILLE, FLORIDA

Checked By: GHR
Designed By: WRM
Drawn By: WRM
File Name: 20-111-HAZZL_SAR.DGN
Date: SEP 2020

GULF INTRACOASTAL WATERWAY RIVER
CALOOCOTA WATERWAY
SARASOTA COUNTY, FLORIDA
HYDROGRAPHIC EXAM SURVEY FY20
9-FOOT PROJECT
PLAN
STA. 12+00 CUT S-21 THRU STA. 17+00 CUT S-22





 US Army Corps of Engineers

 Jacksonville District

 SAFETY ON THIS JOB

 DEPENDS ON YOU

DEPARTMENT OF THE ARMY

 JACKSONVILLE DISTRICT, CORPS OF ENGINEERS

 JACKSONVILLE, FLORIDA

Designated By: GHR

 Designated By: WRM

 Designated By: WRM

 Designated By: WRM

 Date: SEP 2020

GULF INTRACOASTAL WATERWAY RIVER

 CALOOCHEE RIVER

 SARASOTA COUNTY, FLORIDA

HYDROGRAPHIC EXAM SURVEY FY20

9-FOOT PROJECT

 STA. 17+00 CUT S-22 THRU STA. 28+00 CUT S-23

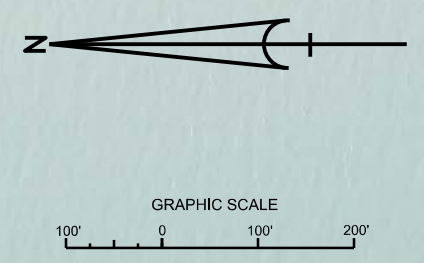
Scale: AS SHOWN

 Drawing no.

28

 SHEET 28 OF 62

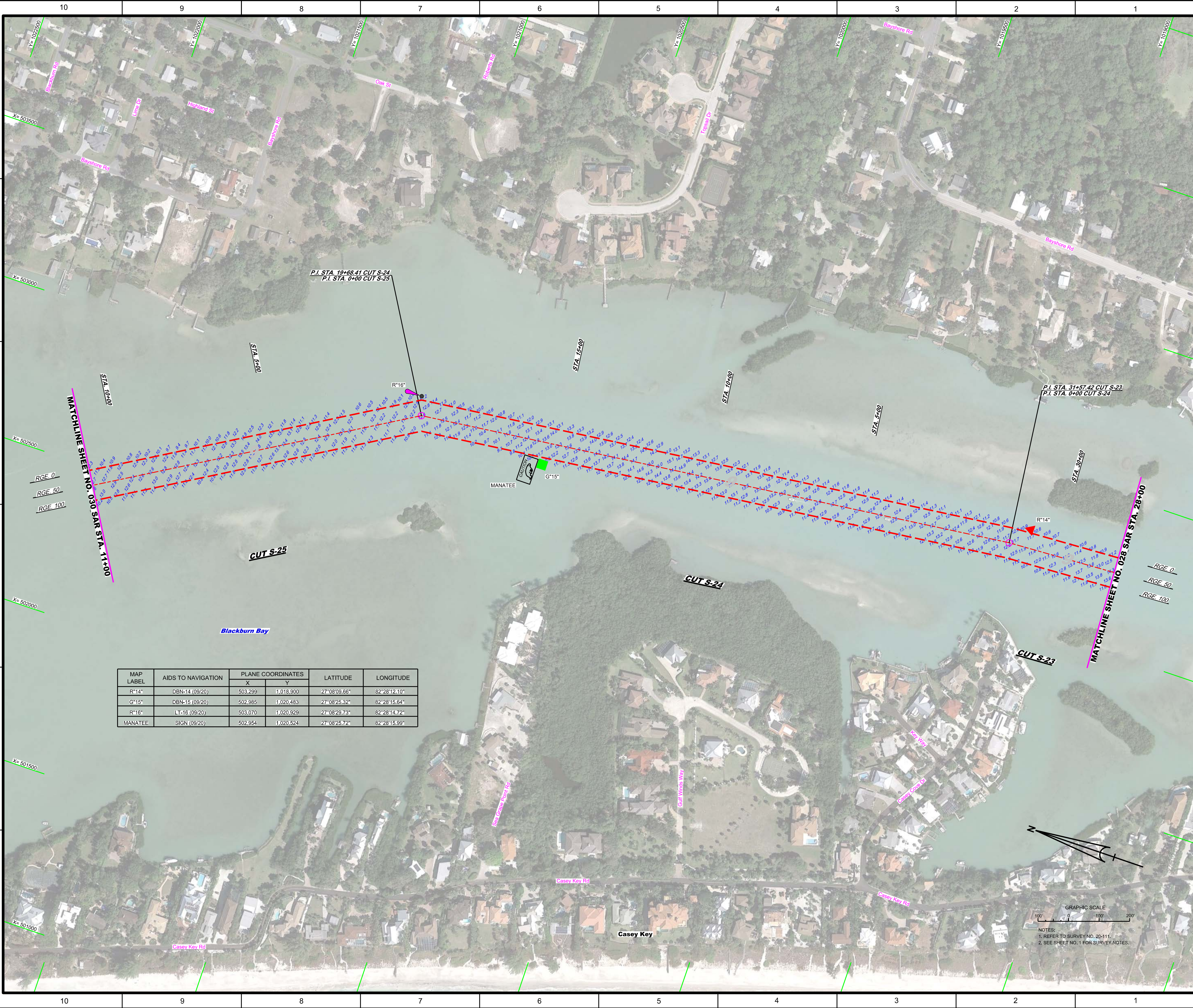
MAP LABEL	AIDS TO NAVIGATION	PLANE COORDINATES		LATITUDE	LONGITUDE
		X	Y		
R*12"	LT-12 (09/20)	503,481	1,015,785	27°07'38.81"	82°28'09.95"
G*13"	DBN-13 (09/20)	503,259	1,017,225	27°07'53.06"	82°28'12.47"
INFO SIGN	SIGN (09/20)	503,236	1,017,304	27°07'53.84"	82°28'12.73"
INFO SIGN	SIGN (09/20)	503,404	1,017,330	27°07'54.11"	82°28'10.88"




NOTES:

 1. REFER TO SURVEY NO. 20-111.

 2. SEE SHEET NO. 1 FOR SURVEY NOTES.



MAP LABEL	AIDS TO NAVIGATION	PLANE COORDINATES		LATITUDE	LONGITUDE
		X	Y		
R*14	DBN-14 (09/20)	503,299	1,018,900	27°08'09.66"	82°28'12.10"
G*15	DBN-15 (09/20)	502,985	1,020,463	27°08'25.32"	82°28'15.64"
R*16	LT-16 (09/20)	503,070	1,020,929	27°08'29.75"	82°28'14.72"
MANATEE	SIGN (09/20)	502,954	1,020,524	27°08'25.72"	82°28'15.99"



US Army Corps of Engineers
Jacksonville District

SAFETY ON THIS JOB DEPENDS ON YOU

Drawn by: _____
Checked by: _____
Title: _____
Scale: _____
Date: _____

DEPARTMENT OF THE ARMY
JACKSONVILLE DISTRICT, CORPS OF ENGINEERS
JACKSONVILLE, FLORIDA

Contract No: _____
Task Order: _____
Project: _____
Phase: _____

Revision: _____
Date: _____
By: _____
Check: _____

XXXXXXXXXXXXXXXXXXXX
20-1114-S-01A_S23.DGN
20-1114-S-01A_S24.DGN
20-1114-S-01A_S25.DGN
20-1114-S-01A_SAR.DGN
20-1114-S-01A_S23.DGN

XXXXXXXXXXXXXXXXXXXX
20-1114-S-01A_S23.DGN
20-1114-S-01A_S24.DGN
20-1114-S-01A_S25.DGN
20-1114-S-01A_SAR.DGN
20-1114-S-01A_S23.DGN

GULF INTRACASTAL WATERWAY TO THE RIVER
CALOOCHEE COUNTY, FLORIDA

HYDROGRAPHIC EXAM SURVEY FY20
9-FOOT PROJECT

STA. 28+00 CUT S-23 THRU STA. 11+00 CUT S-25

PLAN

Scale: AS SHOWN

Drawing no.

29

SHEET 29 OF 62



MAP LABEL	AIDS TO NAVIGATION	PLANE COORDINATES		LATITUDE	LONGITUDE
		X	Y		
G*19"	DBN-19 (09/20)	501.781	1,022.838	27°08'48.60"	82°28'29.07"
R*20"	DBN-20 (09/20)	500.852	1,024.883	27°09'06.83"	82°28'39.43"

US Army Corps of Engineers
Jacksonville District

SAFETY ON THIS JOB DEPENDS ON YOU

DEPARTMENT OF THE ARMY
JACKSONVILLE DISTRICT, CORPS OF ENGINEERS
JACKSONVILLE, FLORIDA

HYDROGRAPHIC EXAM SURVEY FY20
9-FOOT PROJECT
STA. 11+00 THRU STA. 44+00 CUT S-25
PLAN

Scale: AS SHOWN

Drawing no.
30

SHEET 30 OF 62




 US Army Corps of Engineers
 Jacksonville District
 SAFETY ON THIS JOB
 DEPENDS ON YOU

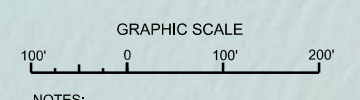
DEPARTMENT OF THE ARMY
 JACKSONVILLE DISTRICT, CORPS OF ENGINEERS
 JACKSONVILLE, FLORIDA

Call by: GHR
 Designed by: WRM
 DWM/PJF
 WRM
 File No.: 20-1116-BS-RRR_SAR.DGN
 Date: SEP 2020
 Reference files: 20-1116-RRR_SAR.DGN

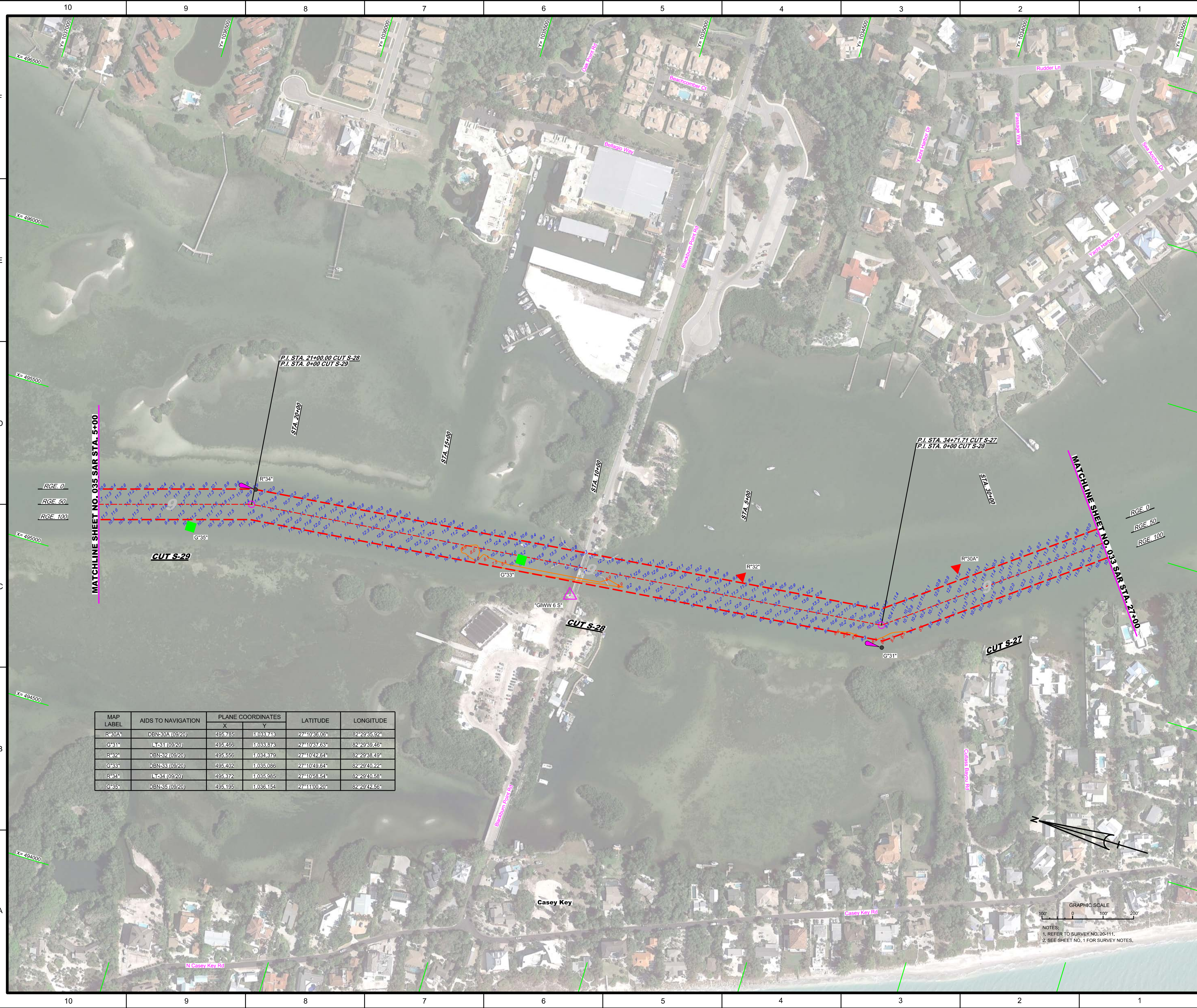
GULF INTRACOASTAL WATERWAY - CUT S-25
 CALOOCHEE RIVER
 SARASOTA COUNTY, FLORIDA
HYDROGRAPHIC EXAM SURVEY FY20
9-FOOT PROJECT
 STA. 77+00 CUT S-25 THRU STA. 28+00 CUT S-26
PLAN

Scale: AS SHOWN
 Drawing no. **32**
 SHEET 32 OF 62

MAP LABEL	AIDS TO NAVIGATION	PLANE COORDINATES		LATITUDE	LONGITUDE
		X	Y		
R"22"	DBN-22 (09/20)	498,911	1,027,920	27°09'38.81"	82°29'01.06"
G"23"	LT-23 (09/20)	498,774	1,027,876	27°09'38.37"	82°29'02.57"
G"25"	DBN-25 (09/20)	498,342	1,029,001	27°09'49.50"	82°29'07.40"
INFO SIGN	SIGN (09/20)	498,632	1,028,137	27°09'40.95"	82°29'04.15"

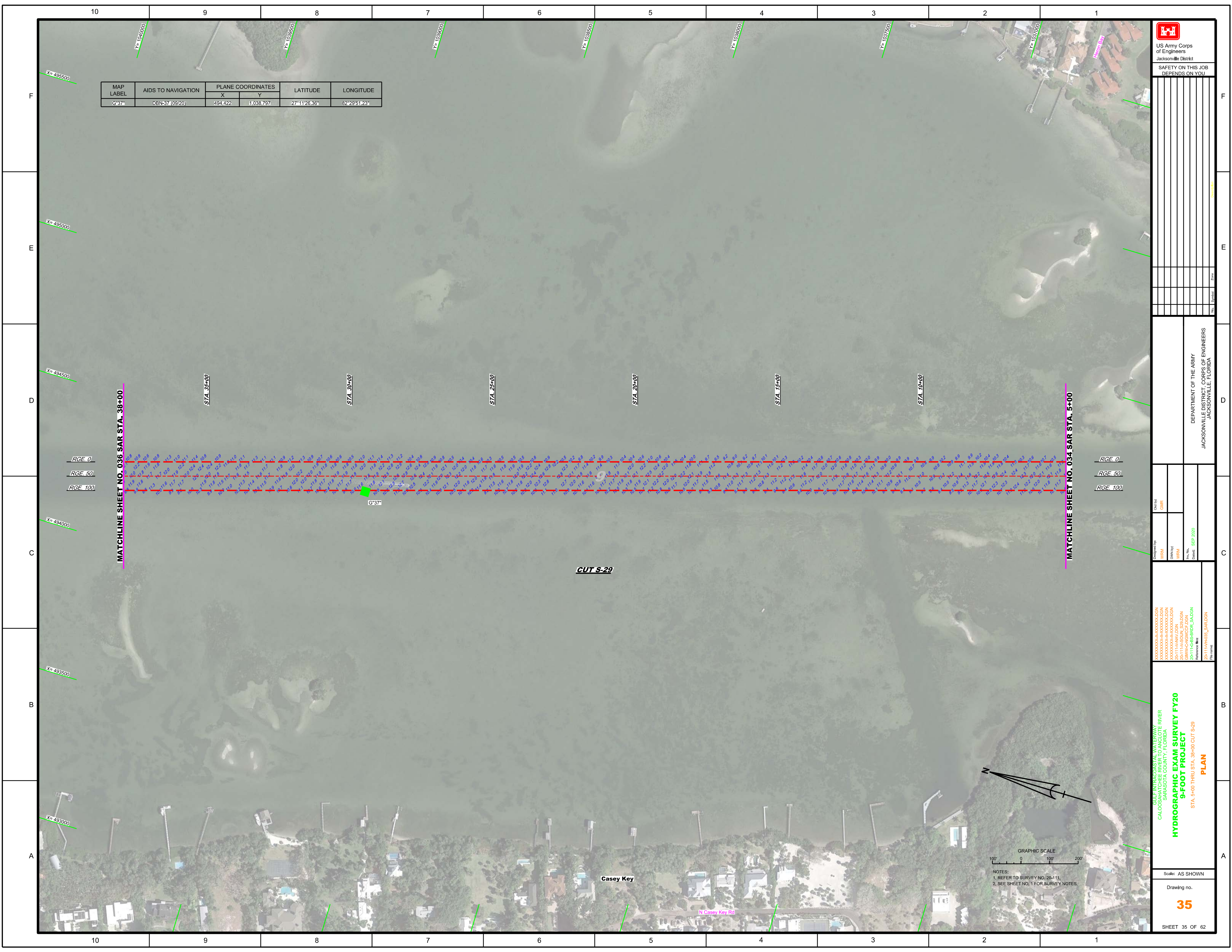


NOTES:
 1. REFER TO SURVEY NO. 20-111.
 2. SEE SHEET NO. 1 FOR SURVEY NOTES.



MAP LABEL	AIDS TO NAVIGATION	PLANE COORDINATES		LATITUDE	LONGITUDE
		X	Y		
R30A	DBN-30A (09/20)	495785	11033713	27°10'38.06"	82°29'35.92"
G31	LT-31 (09/20)	495466	11033873	27°10'37.63"	82°29'39.46"
R32	DBN-32 (09/20)	495556	11034379	27°10'42.64"	82°29'38.49"
G33	DBN-33 (09/20)	495402	11035086	27°10'49.64"	82°29'40.22"
R34	LT-34 (09/20)	495372	11035985	27°10'58.54"	82°29'40.58"
G35	DBN-35 (09/20)	495195	11035154	27°11'00.20"	82°29'42.55"

NOTES:
 1. REFER TO SURVEY NO. 20-111.
 2. SEE SHEET NO. 1 FOR SURVEY NOTES.



MAP LABEL	AIDS TO NAVIGATION	PLANE COORDINATES		LATITUDE	LONGITUDE
		X	Y		
G-37	DBN-37 (09/20)	494,422	1,038,797	27°11'26.36"	82°29'51.23"

US Army Corps
 of Engineers
 Jacksonville District
**SAFETY ON THIS JOB
 DEPENDS ON YOU**

DEPARTMENT OF THE ARMY
 JACKSONVILLE DISTRICT, CORPS OF ENGINEERS
 JACKSONVILLE, FLORIDA

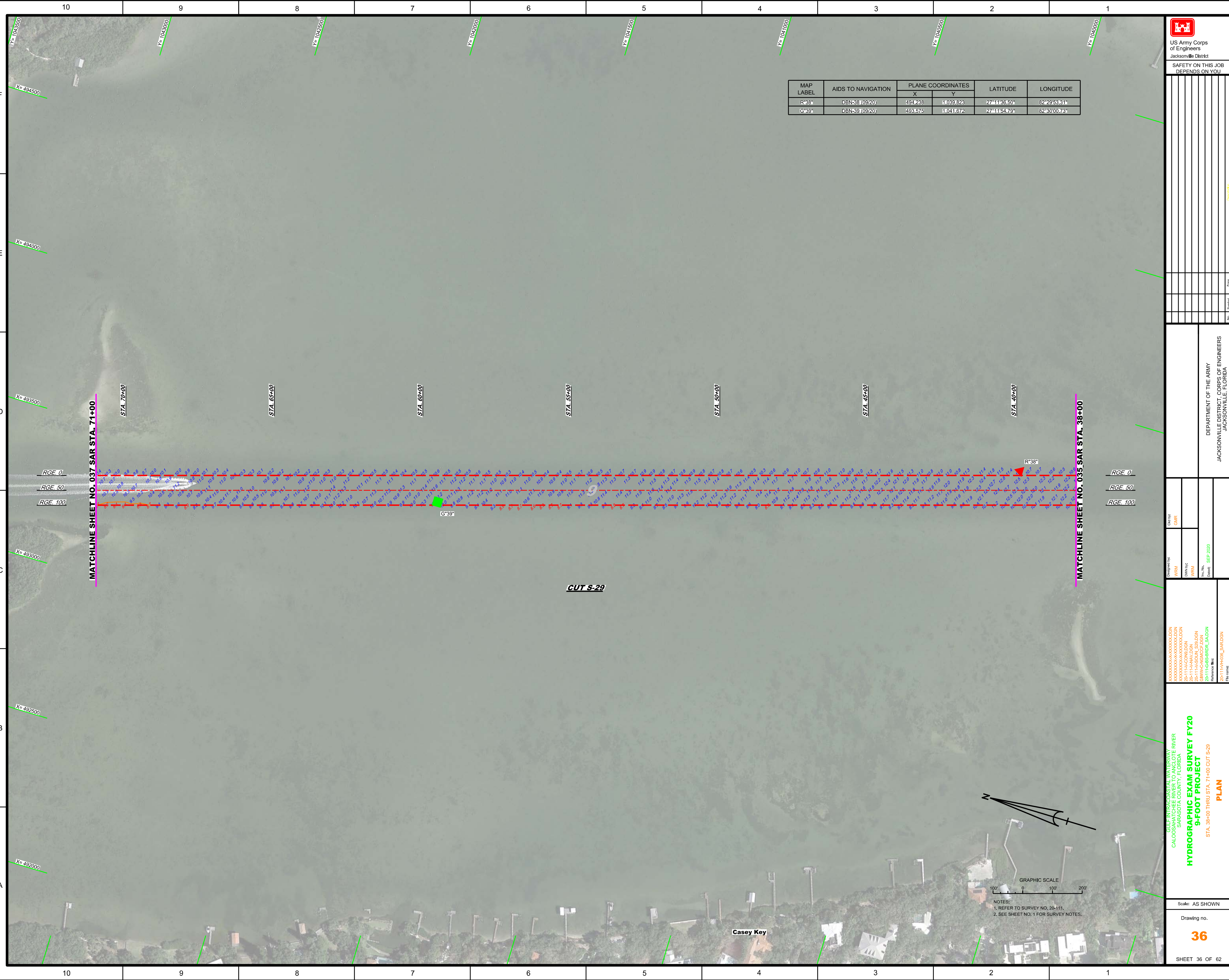
**Hydrographic Exam Survey FY20
 9-FOOT PROJECT**
 STA. 5+00 THRU STA. 38+00 CUT S-29
PLAN
 File name: 2D-11-HYDRO_SAR.DGN

GULF INTRACASTAL WATERWAY RIVER
 CALOOCANY WATERSHED
 SARASOTA COUNTY, FLORIDA
**HYDROGRAPHIC EXAM SURVEY FY20
 9-FOOT PROJECT**
 STA. 5+00 THRU STA. 38+00 CUT S-29
PLAN
 File name: 2D-11-HYDRO_SAR.DGN

Scale: AS SHOWN
 Drawing no.
35
 SHEET 35 OF 62



NOTES:
 1. REFER TO SURVEY NO. 20-111.
 2. SEE SHEET NO. 1 FOR SURVEY NOTES.




MAP LABEL	AIDS TO NAVIGATION	PLANE COORDINATES		LATITUDE	LONGITUDE
		X	Y		
R-38"	DBN-38 (09/20)	494,238	11039,828	27°11'36.50"	82°29'53.81"
G-39"	DBN-39 (09/20)	493,676	11041,672	27°11'54.79"	82°30'00.73"

MATCHLINE SHEET NO. 037 SAR STA. 71+00

MATCHLINE SHEET NO. 035 SAR STA. 38+00

CUT S-29



US Army Corps of Engineers
Jacksonville District

SAFETY ON THIS JOB DEPENDS ON YOU

DESIGNED BY: WRM
DWN BY: WRM
CHKD BY: WRM
DATE: SEP 2020

DEPARTMENT OF THE ARMY
JACKSONVILLE DISTRICT, CORPS OF ENGINEERS
JACKSONVILLE, FLORIDA

XXXXXXXXXXXXXXXXXXXX.DGN
XXXXXXXXXXXXXXXXXXXX.DGN
20-11-HAWV.DGN
20-11-G-BR-SR-SAD.DGN
20-11-HH-ROE-SAR.DGN

GULF INTRACASTAL WATERWAY RIVER
CALOOCHEE RIVER
SARASOTA COUNTY, FLORIDA

**HYDROGRAPHIC EXAM SURVEY FY20
9-FOOT PROJECT**

STA. 38+00 THRU STA. 71+00 CUT S-29

PLAN

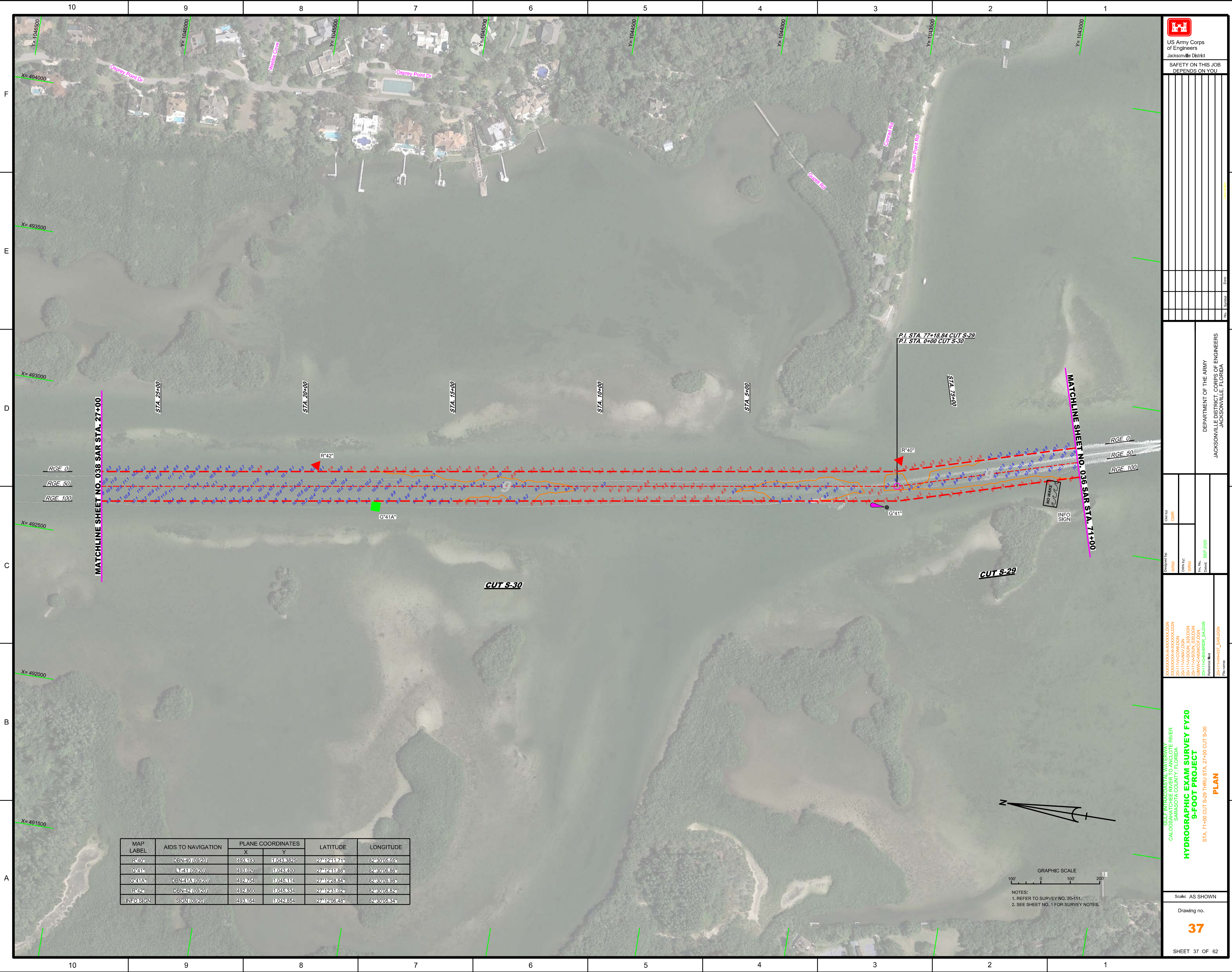
Scale: AS SHOWN

Drawing no. **36**

SHEET 36 OF 62

GRAPHIC SCALE
100' 0 100' 200'

NOTES:
1. REFER TO SURVEY NO. 20-111.
2. SEE SHEET NO. 1 FOR SURVEY NOTES.



MAP LABEL	AIDS TO NAVIGATION	PLANE COORDINATES		LATITUDE	LONGITUDE
		X	Y		
R40	DBN-10 (09/20)	493193	1,043,3825	27°12'11.71"	82°30'05.05"
G41A	L-11 (09/20)	493029	1,043,400	27°12'11.88"	82°30'06.86"
G41A	DBN-11A (09/20)	492754	1,045,114	27°12'28.84"	82°30'09.58"
R42	DBN-12 (09/20)	492850	1,045,534	27°12'31.02"	82°30'08.82"
INFO SIGN	SIGN (09/20)	493164	1,042,854	27°12'06.48"	82°30'05.34"

US Army Corps of Engineers
Jacksonville District

SAFETY ON THIS JOB
DEPENDS ON YOU

DEPARTMENT OF THE ARMY
JACKSONVILLE DISTRICT, CORPS OF ENGINEERS
JACKSONVILLE, FLORIDA

Drawn by: GHR
Checked by: GHR
Designed by: WRM
DWG No: WRM
File No: WRM
Date: SEP 2020

XXXXXXXXXXXXXXXXXXXX.DGN
XXXXXXXXXXXXXXXXXXXX.DGN
20-1114-SOLA_S29.DGN
20-1114-SOLA_S30.DGN
20-1114-SOLA_S31.DGN
20-1114-SOLA_S32.DGN
20-1114-SOLA_S33.DGN
20-1114-SOLA_S34.DGN
20-1114-SOLA_S35.DGN
20-1114-SOLA_S36.DGN
20-1114-SOLA_S37.DGN
20-1114-SOLA_S38.DGN
20-1114-SOLA_S39.DGN
20-1114-SOLA_S40.DGN
20-1114-SOLA_S41.DGN
20-1114-SOLA_S42.DGN
20-1114-SOLA_S43.DGN
20-1114-SOLA_S44.DGN
20-1114-SOLA_S45.DGN
20-1114-SOLA_S46.DGN
20-1114-SOLA_S47.DGN
20-1114-SOLA_S48.DGN
20-1114-SOLA_S49.DGN
20-1114-SOLA_S50.DGN
20-1114-SOLA_S51.DGN
20-1114-SOLA_S52.DGN
20-1114-SOLA_S53.DGN
20-1114-SOLA_S54.DGN
20-1114-SOLA_S55.DGN
20-1114-SOLA_S56.DGN
20-1114-SOLA_S57.DGN
20-1114-SOLA_S58.DGN
20-1114-SOLA_S59.DGN
20-1114-SOLA_S60.DGN
20-1114-SOLA_S61.DGN
20-1114-SOLA_S62.DGN
20-1114-SOLA_S63.DGN
20-1114-SOLA_S64.DGN
20-1114-SOLA_S65.DGN
20-1114-SOLA_S66.DGN
20-1114-SOLA_S67.DGN
20-1114-SOLA_S68.DGN
20-1114-SOLA_S69.DGN
20-1114-SOLA_S70.DGN
20-1114-SOLA_S71.DGN
20-1114-SOLA_S72.DGN
20-1114-SOLA_S73.DGN
20-1114-SOLA_S74.DGN
20-1114-SOLA_S75.DGN
20-1114-SOLA_S76.DGN
20-1114-SOLA_S77.DGN
20-1114-SOLA_S78.DGN
20-1114-SOLA_S79.DGN
20-1114-SOLA_S80.DGN
20-1114-SOLA_S81.DGN
20-1114-SOLA_S82.DGN
20-1114-SOLA_S83.DGN
20-1114-SOLA_S84.DGN
20-1114-SOLA_S85.DGN
20-1114-SOLA_S86.DGN
20-1114-SOLA_S87.DGN
20-1114-SOLA_S88.DGN
20-1114-SOLA_S89.DGN
20-1114-SOLA_S90.DGN
20-1114-SOLA_S91.DGN
20-1114-SOLA_S92.DGN
20-1114-SOLA_S93.DGN
20-1114-SOLA_S94.DGN
20-1114-SOLA_S95.DGN
20-1114-SOLA_S96.DGN
20-1114-SOLA_S97.DGN
20-1114-SOLA_S98.DGN
20-1114-SOLA_S99.DGN
20-1114-SOLA_S100.DGN

File name:
20-1114-HR37_SAR.DGN

GULF INTRACASTAL WATERWAY RIVER
CALOOCOTA COUNTY, FLORIDA

HYDROGRAPHIC EXAM SURVEY FY20
9-FOOT PROJECT

STA. 71+00 CUT S-29 THRU STA. 27+00 CUT S-30

PLAN

Scale: AS SHOWN

Drawing no.
37

SHEET 37 OF 62

GRAPHIC SCALE
100' 0 100' 200'

NOTES:
1. REFER TO SURVEY NO. 20-111.
2. SEE SHEET NO. 1 FOR SURVEY NOTES.

US Army Corps of Engineers
Jacksonville District
SAFETY ON THIS JOB
DEPENDS ON YOU

DEPARTMENT OF THE ARMY
JACKSONVILLE DISTRICT, CORPS OF ENGINEERS
JACKSONVILLE, FLORIDA

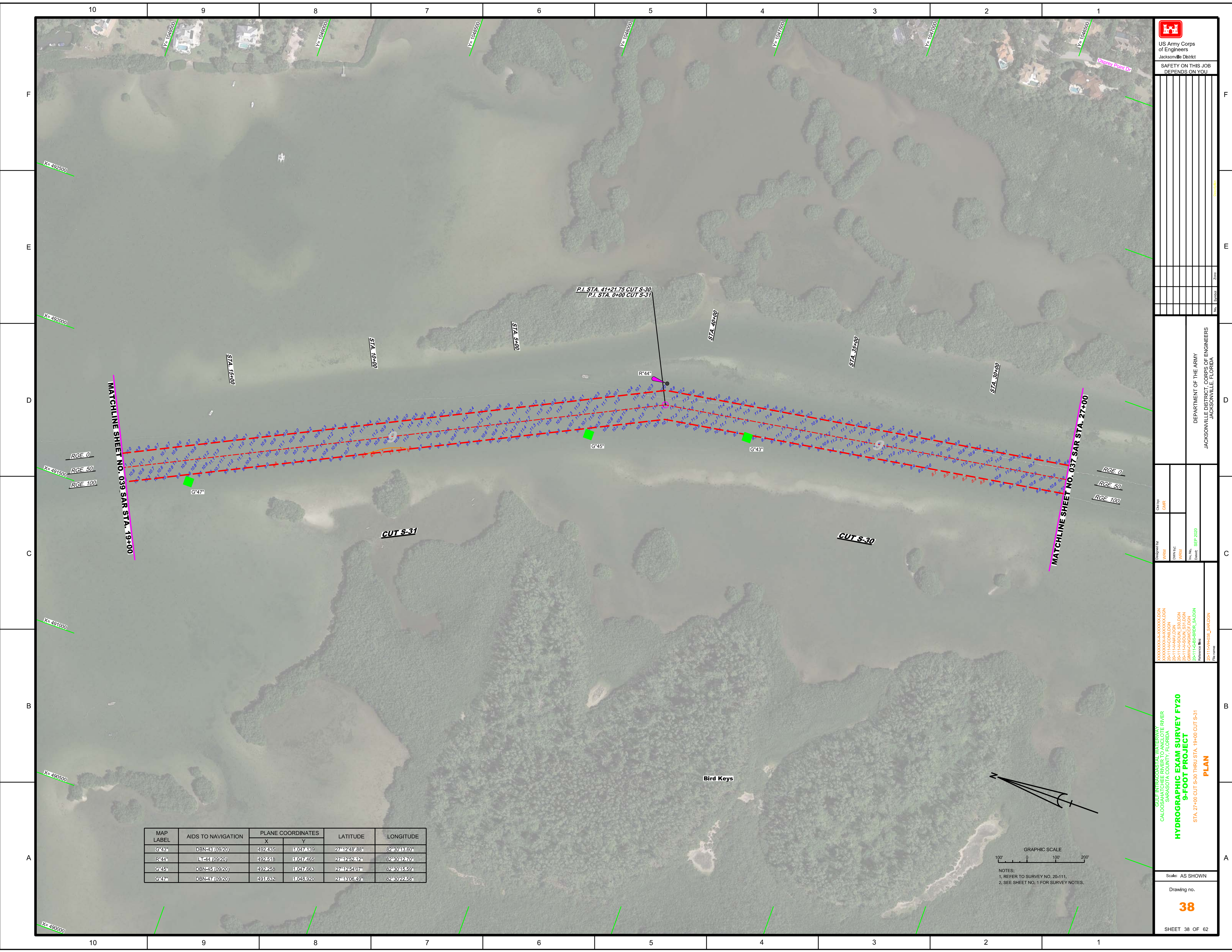
Checked by: GJR
Designed by: WRM
Drawn by: WRM
File Name: 20-1114-HR-020
Date: 09/2020

GULF INTRACOSTAL WATERWAY RIVER
CALOOCHEE WATERSHED
SARASOTA COUNTY, FLORIDA
**HYDROGRAPHIC EXAM SURVEY FY20
9-FOOT PROJECT**
STA. 27+00 CUT S-30 THRU STA. 19+00 CUT S-31
PLAN

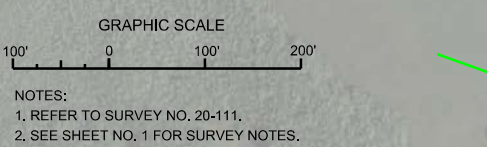
Scale: AS SHOWN

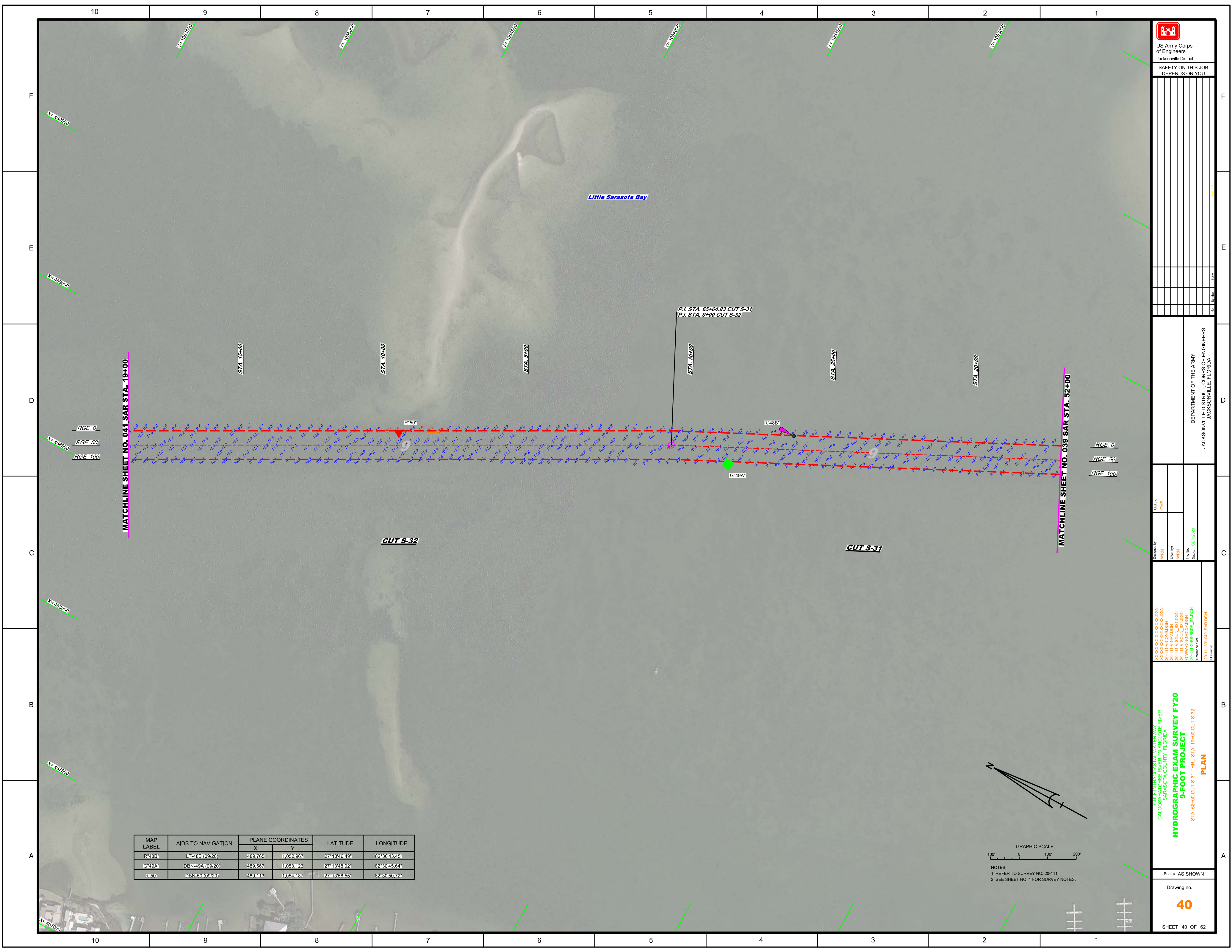
Drawing no.
38


SHEET 38 OF 62



MAP LABEL	AIDS TO NAVIGATION	PLANE COORDINATES		LATITUDE	LONGITUDE
		X	Y		
G-43*	DBN-43 (09/20)	492,435	11047,189	27°12'48".88"	82°30'18.60"
R-44*	LT-44 (09/20)	492,518	11047,465	27°12'52".12"	82°30'12.70"
G-45*	DBN-45 (09/20)	492,458	11047,663	27°12'54".07"	82°30'15.59"
G-47*	DBN-47 (09/20)	491,632	11048,920	27°18'05".49"	82°30'22.55"






 US Army Corps of Engineers
 Jacksonville District
 SAFETY ON THIS JOB DEPENDS ON YOU

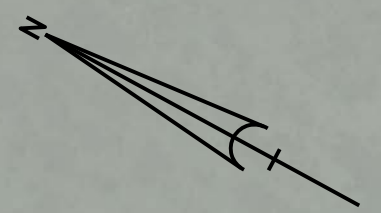
DEPARTMENT OF THE ARMY
 JACKSONVILLE DISTRICT, CORPS OF ENGINEERS
 JACKSONVILLE, FLORIDA

Designated by: WRM
 Drawn by: WRM
 Checked: SEP 2020
 File name: 20-111-PAHAL_SAR.DGN

GULF INTRACOSTAL WATERWAY RIVER
 SARASOTA COUNTY, FLORIDA
HYDROGRAPHIC EXAM SURVEY FY20
9-FOOT PROJECT
 STA. 52+00 CUT S-31 THRU STA. 19+00 CUT S-32
PLAN

Scale: AS SHOWN
 Drawing no.
40
 SHEET 40 OF 62

MAP LABEL	AIDS TO NAVIGATION	PLANE COORDINATES		LATITUDE	LONGITUDE
		X	Y		
R-48B	LT-488 (09/20)	489765	11052967	27°13'46.49"	82°30'43.45"
G-49A	DBN-49A (09/20)	489567	11053123	27°13'43.02"	82°30'45.52"
R-50	DBN-50 (09/20)	489118	11054187	27°13'58.55"	82°30'50.72"



GRAPHIC SCALE
 100' 0 100' 200'
 NOTES:
 1. REFER TO SURVEY NO. 20-111.
 2. SEE SHEET NO. 1 FOR SURVEY NOTES.